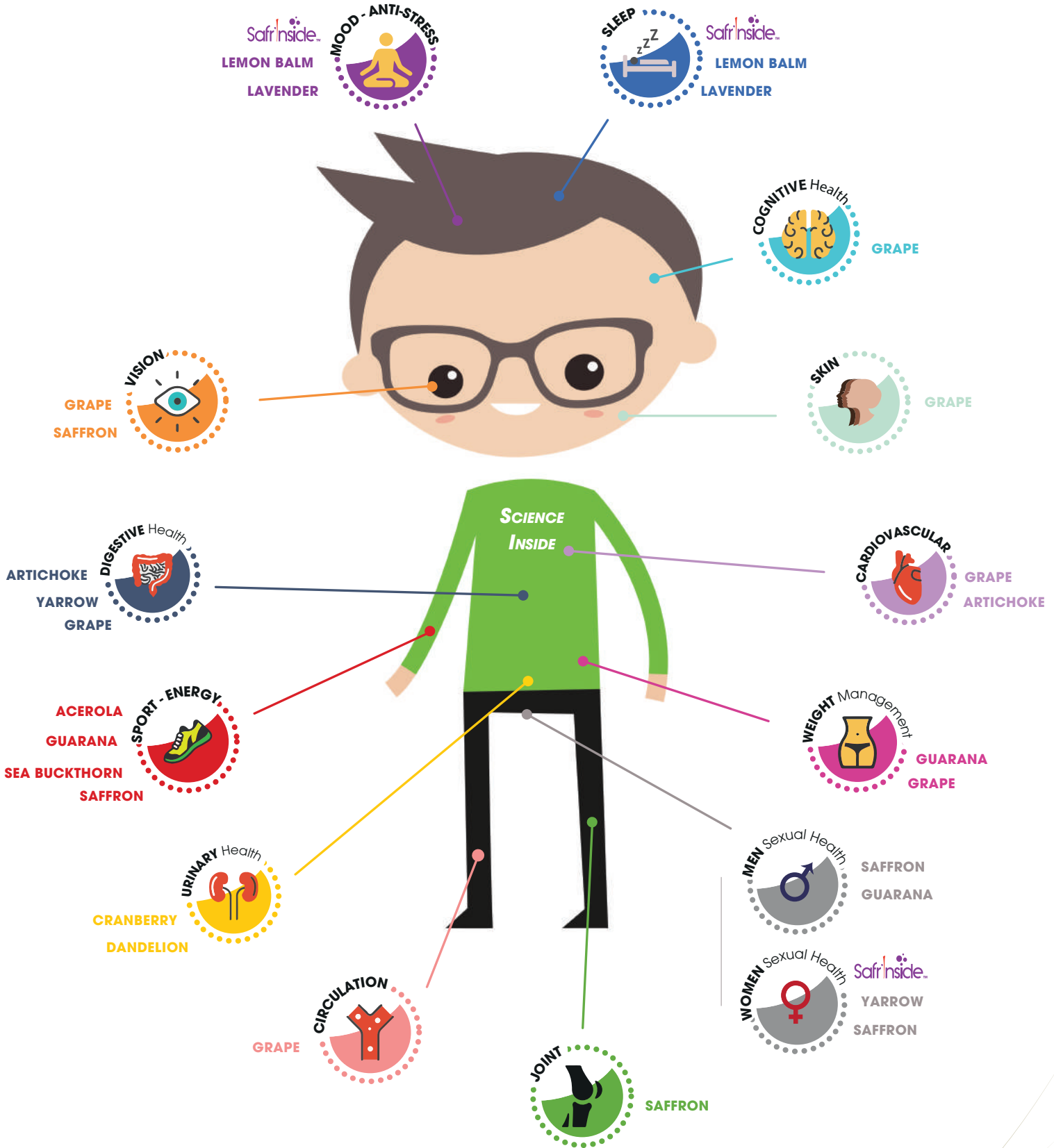




# WHICH ORGANIC INGREDIENTS

## DO YOU NEED?





**ACEROLA**  
*Malpighia glabra L.*

**ACEROLA INSIDE EX 17 CO**  
17% Ascorbic acid  
(PR-0193)



**ARTICHOKE**  
*Cynara scolymus L.*

**ARTICHOKE INSIDE EX 2.5 CO**  
2.5% Total Polyphenols  
(PR-0178)



**CRANBERRY**  
*Vaccinium macrocarpon A.*

**CRAN'INSIDE EX 7 CO**  
7% PAC'S (EP)  
(PR-0084)

**CRAN'INSIDE EX 10 CO**  
10% PAC'S (EP)  
(PR-0106)



**DANDELION**  
*Taraxacum officinale Web*

**TARAXACUM INSIDE EX 4-1 CO**  
Plant:Extract ratio 4:1  
(PR-0091)



**GRAPE**  
*Vitis Vinifera L.*

**GRAPE SEED INSIDE EX 75P CO**  
75% Total Polyphenols (UV)  
50% OPC (Folin)  
(PR-0236)

**GRAPE SEED INSIDE EX 40P CO**  
40% Total Polyphenols (Folin)  
(PR-0235)

**GRAPE SEED INSIDE EX 10P CO**  
10% Total Polyphenols (UV)  
(PR-0237)

**GRAPE SEED INSIDE 50F CO**  
50% Fibers  
(PR-0210)



**GUARANA**  
*Paullinia cupana Kunth var. sorbilis (L.)*

**GUARANA INSIDE EX 10 CO**  
10% Caffeine  
(PR-0135)



**KLAMATH**  
*Aphanizomenon flos-aquae Ralfs ex Born.*

**KLAMATH CO**  
5% Phycocyanin  
< 1.0 ppm Microcystin  
(PR-0223)



**LAVENDER**  
*Lavandula angustifolia Mill.*

**LAVENDER INSIDE CO**  
Lavender flower powder  
(PR-0204)



**LEMON BALM**  
*Melissa officinalis L.*

**LEMON BALM'INSIDE EX 15 CO**  
15% Total Hydroxycinnamic Acid  
4% Rosmarinic acid  
(PR-0049)



**SAFFRON**  
*Crocus sativus L.*

**SAFR'INSIDE™ CO**  
2% Safranal (UV)  
0.2% Safranal (U-HPLC)  
3% Crocins (U-HPLC)  
12% Saframotivines (UV)  
(PR-0153)

**SAFFRON EX 4C CO**  
4% Crocins (U-HPLC)  
(PR-0234)

**SAFFRON EX 0.4 CO**  
0.4% Safranal (UV)  
(PR-0202)



**SEA BUCKTHORN**  
*Hippophae rhamnoides L.*

**SEA BUCKTHORN INSIDE 0.5 CO**  
0.5% Ascorbic Acid  
(PR-0200)



**YARROW**  
*Achillea millefolium L.*

**YARROW INSIDE EX 4-1 CO**  
Plant:Extract ratio 4:1  
(PR-0205)