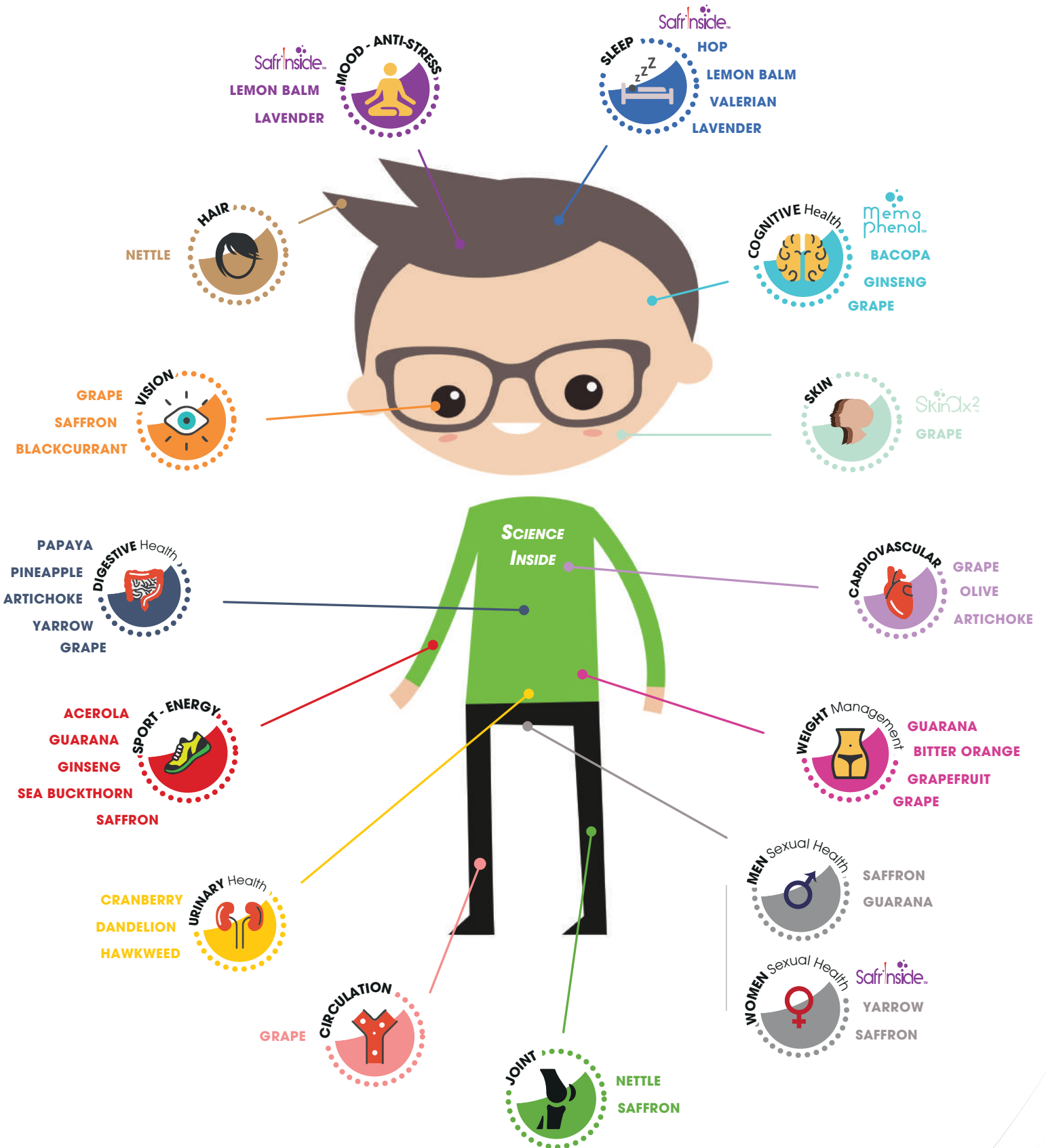




WHICH INGREDIENTS DO YOU NEED?





BACOPA
Bacopa monnieri L., Wettst

BACOP'INSIDE EX 20
20% Bacosides
(PR-0100)



BITTER ORANGE
Citrus aurantium L.

AURANTIUM INSIDE EX 45
≥ 45% Total Flavonoids
≤ 2% Para-Synephrine
(PR-0111)



BLACKCURRANT
Ribes nigrum L.

BLACKCURRANT'INSIDE EX 30
30% Anthocyanins
(PR-0026)



CRANBERRY
Vaccinium macrocarpon A.

CRAN'INSIDE EX 7
7% PAC'S (EP)
(PR-0083)

CRAN'INSIDE EX 10
10% PAC'S (EP)
(PR-0045)

CRAN'INSIDE EX 15
15% PAC'S (EP)
(PR-0105)

CRAN'INSIDE EX 30
30% PAC'S (EP)
(PR-0029)

CRAN'INSIDE DMAC 13
13-17% PAC'S (DMAC)
(PR-0067)



GINSENG
Panax ginseng C. A. Meyer

GINSENG ROOTS INSIDE EX 12
12% Total Ginsenosides
(PR-0074)



PAPAYA
Carica Papaya L.

PAPAIN INSIDE EX 1.6 SF
1.6 - 2.5 Unit FIP/mg
Proteolytic activity
(PR-0113)



PINEAPPLE
Ananas comosus L.

BROMELAIN INSIDE EX 3.6
3.6 - 4.2 Unit FIP/mg
Proteolytic activity
(PR-0108)



HAWKWEED
Hieracium pilosella L.

HAWKWEED INSIDE EX 1
1% Total Flavonoids
(PR-0126)



HOP
Humulus lupulus L.

HUMULUS INSIDE EX 0.5
≤20 ppm 8-PN
0.5% Total Flavonoids
(PR-0051)



LEMON BALM
Melissa officinalis L.

LEMON BALM'INSIDE EX 15
15% Total Hydroxycinnamic Acid
7% Rosmarinic acid
(PR-0031)

NATURAL Mg LEMON BALM INSIDE SL
2% Total Hydroxycinnamic Acid
8% Magnesium
(PR-0130)



LEMON BALM INSIDE EX 9-1
Plant:extract ratio 8-10:1
(PR-0231)



NETTLE
Urtica dioica L.

NETTLE LEAVES INSIDE ST 0.1
0.1% Total Phytosterols
1% Total Silica
(PR-0104)

NETTLE LEAVES INSIDE EX 4-1
Plant:Extract ratio 4:1
(PR-0166)

NETTLE LEAVES INSIDE EX 10-1
Plant:Extract ratio 10:1
(PR-0169)



OLIVE
Olea europaea L.

OLIVE FRUIT INSIDE EX 6
6% Hydroxytyrosol
1% Tyrosol
(PR-0075)

OLIVE LEAVES INSIDE EX 6
6% Oleuropein
(PR-0136)



GRAPEFRUIT
Citrus paradisi Macfad

GRAPEFRUIT INSIDE EX 45
45% Total Flavonoids
(PR-0156)



GUARANA
Paullinia cupana Kunth var. *sorbilis* (L.)

GUARANA INSIDE ST 15
15-18% Caffeine
(PR-0077)



POLYGONUM
Fallopia japonica (Houtt.) Ronse Dec.

RESVER'INSIDE EX 98
98% Trans-Resveratrol
(PR-0018)



VALERIAN
Valeriana officinalis L.

VALERIAN INSIDE EX 0.8
0.8% Sesquiterpenics acid
(PR-0164)



Organic range



ACEROLA
Malpighia glabra L.

ACEROLA INSIDE EX 17 CO
17% Ascorbic acid
(PR-0193)



ARTICHOKE
Cynara scolymus L.

ARTICHOKE INSIDE EX 2.5 CO
2.5% Total Polyphenols
(PR-0178)



CRANBERRY
Vaccinium macrocarpon A.

CRAN'INSIDE EX 7 CO
7% PAC'S (EP)
(PR-0084)

CRAN'INSIDE EX 10 CO
10% PAC'S (EP)
(PR-0106)



DANDELION
Taraxacum officinale Web

TARAXACUM INSIDE EX 4-1 CO
Plant:Extract ratio 4:1
(PR-0091)



GUARANA
Paullinia cupana Kunth var. *sorbilis* (L.)

GUARANA INSIDE EX 10 CO
10% Caffeine
(PR-0135)



KLAMATH
Aphanizomenon flos-aquae Ralfs ex Born.

KLAMATH CO
5% Phycocyanin
< 1.0 ppm Microcystin
(PR-0223)



LAVENDER
Lavandula angustifolia Mill.

LAVENDER INSIDE CO
Lavender flower powder
(PR-0204)



LEMON BALM
Melissa officinalis L.

LEMON BALM'INSIDE EX 15 CO
15% Total Hydroxycinnamic Acid
4% Rosmarinic acid
(PR-0049)



SEA BUCKTHORN
Hippophae rhamnoides L.

SEA BUCKTHORN INSIDE 0.5 CO
0.5% Ascorbic Acid
(PR-0200)



YARROW
Achillea millefolium L.

YARROW INSIDE EX 4-1 CO
Plant:Extract ratio 4:1
(PR-0205)

V02_April 2018 - BR01-E - © Activ'inside - ©credit: Fotolia

Science inside, claims outside

formore@activinside.com www.activinside.com



Bordeaux Area - FRANCE

