

MOOD • SLEEP QUALITY  
**THINK POSITIVE**  
 PREMENSTRUAL COMFORT

Too MUCH STRESS?  
 FEEL OVERWHELMED?

**69%**  
 people more zen

NEED MORE  
 MOTIVATION?

**78%**  
 people more optimistic

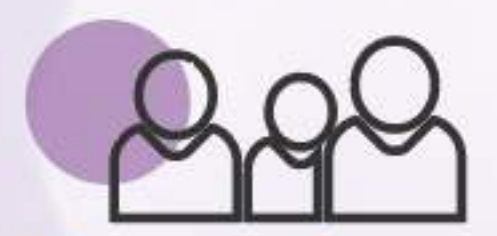
LOOKING FOR A  
 QUICK ACTION?

**EFFICIENT**  
 in less than  
**2 WEEKS**

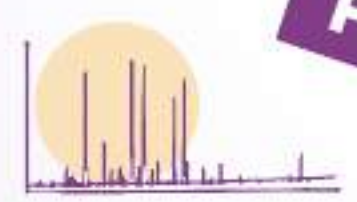
# Safr'Inside™

## SCIENCE Inside

New  
**PUBLICATION**



**Proprietary CONSUMER study**  
 50 healthy adults, 30 mg/day, 15 days



FULL CHARACTERIZATION  
**Proprietary UHPLC method**



PUBLISHED CLINICAL EVIDENCES  
**Similar effects to Fluoxetine**



IDENTIFIED MECHANISMS  
**Multi-parametric action**

## CLAIMS Outside



100 % **IRANIAN SAFFRON**  
**Sargol quality**



SAFRANAL  
 CROCINS  
 DERIVATIVE COMPOUNDS

**Patented profile**  
 MORE THAN 25 COMPOUNDS



CHEMICAL PROFILE BACKED BY MORE  
 THAN **10 clinical studies**



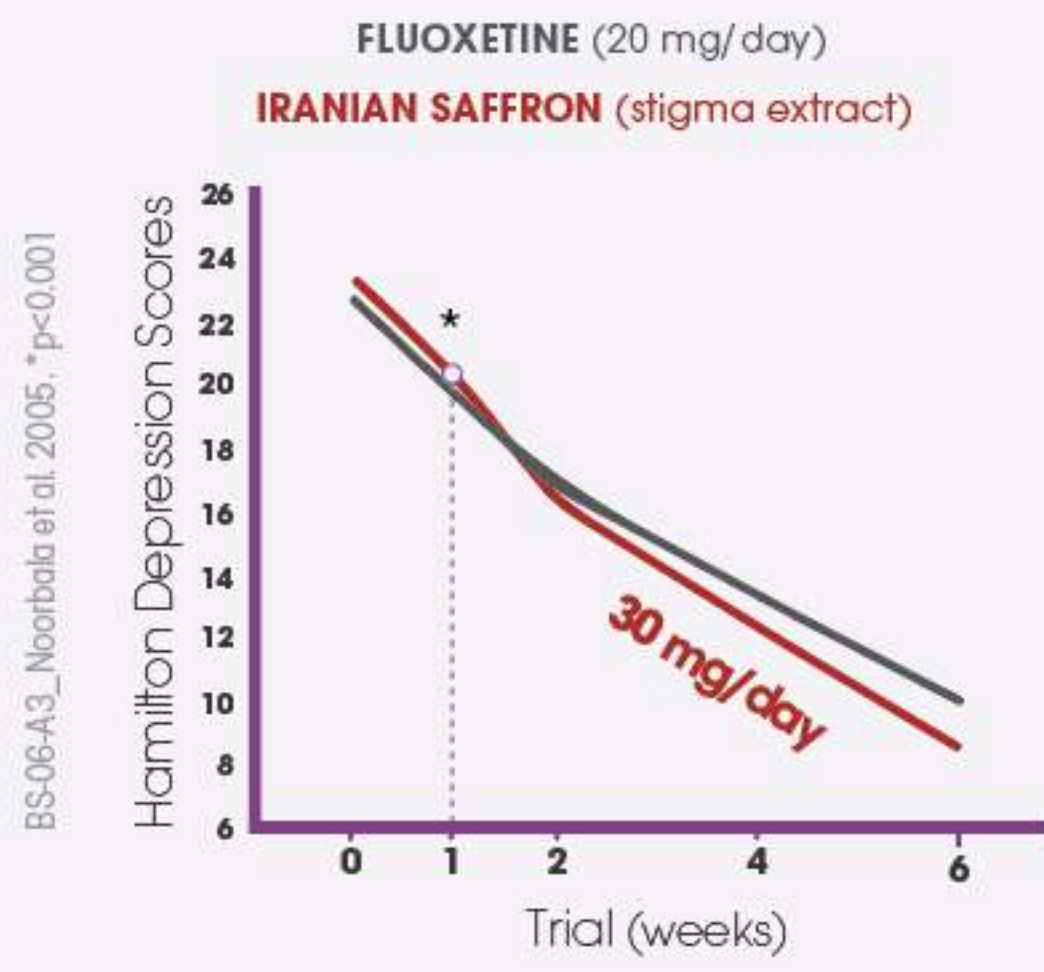
**Patented Process**  
 SOFT TECH' CARE EXTRACTION™







# THE FLUOXETINE-like effect OF SAFFRON



Published clinical studies show that Iranian saffron extract, administered at **30 mg/day**, significantly **relieves severe mood troubles**, in **only 1 week**.

The **saffron efficacy** has been shown to be **similar to FLUOXETINE or IMPRAMINE**, the two main active compounds of pharmaceutical drugs used to treat those disorders, **without any side effects**.



**SAFFRON**  
(*Crocus sativus* L.)

## SARGOL IRANIAN QUALITY

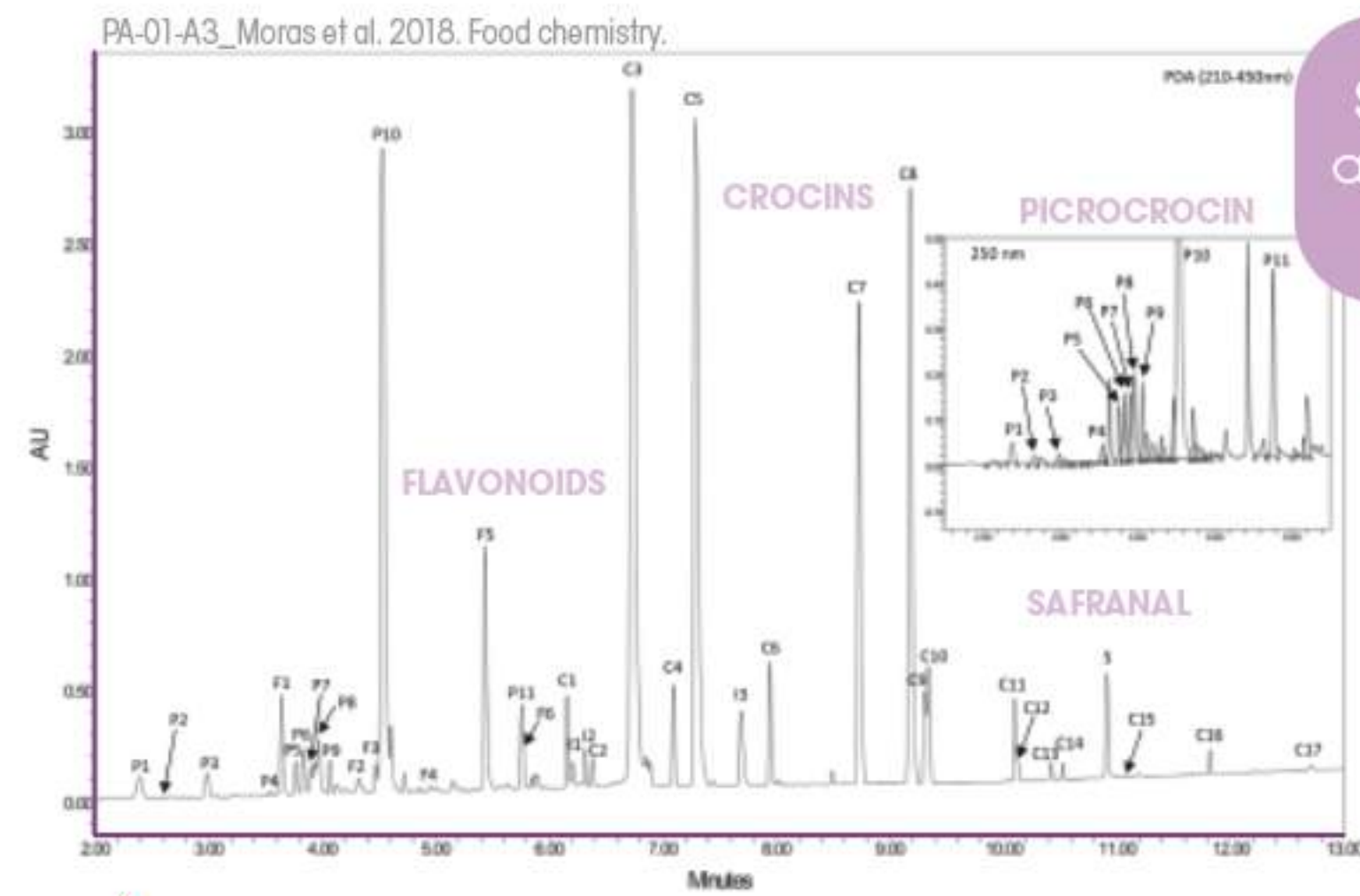
Only the purest and richest quality for Safr'Inside™.



## Safr'Inside™: RICHEST EXTRACT

**SAFRANAL • CROCINS • SAFROMOTIVINES** characterized by both **UV & UHPLC**

More than **25 compounds** identified by **PROPRIETARY IN-HOUSE UHPLC method**.



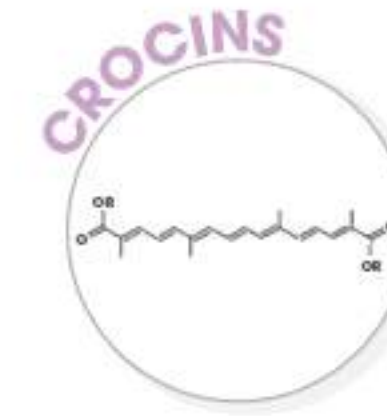
Same chemical profile as Iranian saffron extracts clinically studied



## SOFT TECH'CARE EXTRACTION™

Protects saffron **VOLATILE COMPOUNDS** from temperature variations & solvent alterations.

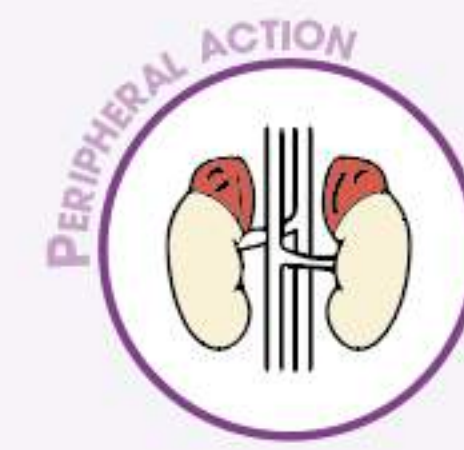
Preserves **NATIVE COMPOSITION** of Iranian saffron and its natural richness in **Safromotivines**.



## A MULTI-PARAMETRIC ACTION



**BALANCE BRAIN NEUROTRANSMITTERS**  
(serotonin, GABA)



**CONTROL CORTISOL SECRETION**

## Safr'Inside™ PROPRIETARY RESULTS

Efficient results **on mood**, after only **15 days** of supplementation.

**4/5** consumers satisfied  
4 out of 5 consumers are **satisfied by Safr'Inside™ effectiveness**

**3/4** People improve emotional balance  
3 out of 4 consumers feel their **emotional balance improved**

**100% CROCUS SATIVUS L.**

- ✓ DNA tested
- ✓ Guaranteed free of adulterations

ONLY **30 mg / day**

for **MOOD • SLEEP QUALITY • PREMENSTRUAL COMFORT**



Science inside, claims outside

formore@activinside.com • www.activinside.com

Bordeaux Area - FRANCE



www.safrinside.com

These statements have not been evaluated by the Food and Drug Administration. This product is not intended to diagnose, treat, cure or prevent any disease. - V03\_May 2018 - BR-01-A3. © Activ'Inside - © Credit: Fotolia.